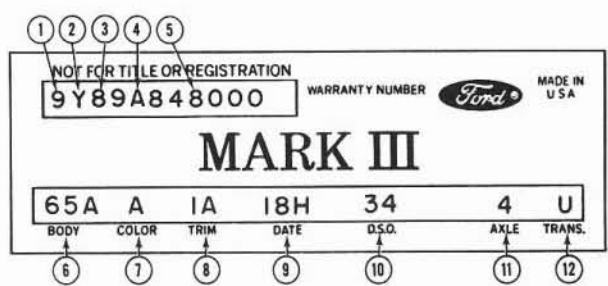
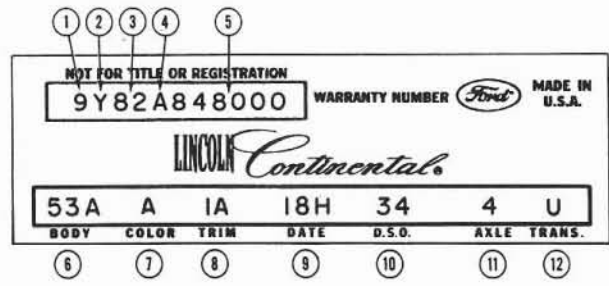
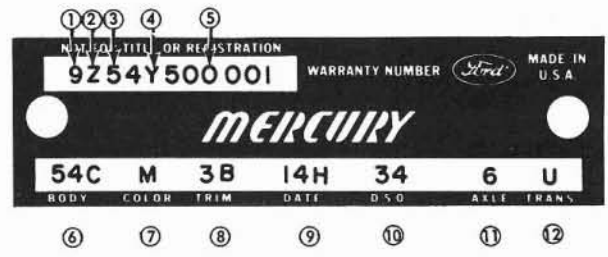


Vehicle Identification



- ① MODEL YEAR CODE
- ② ASSEMBLY PLANT CODE
- ③ BODY SERIAL CODE
- ④ ENGINE CODE
- ⑤ CONSECUTIVE UNIT NO.
- ⑥ BODY TYPE CODE
- ⑦ COLOR CODE
- ⑧ TRIM CODE
- ⑨ DATE CODE
- ⑩ DISTRICT-SPEC. EQUIP. CODE
- ⑪ REAR AXLE CODE
- ⑫ TRANSMISSION CODE

W 1001-A

Fig. 1—Warranty Plates—Passenger Cars

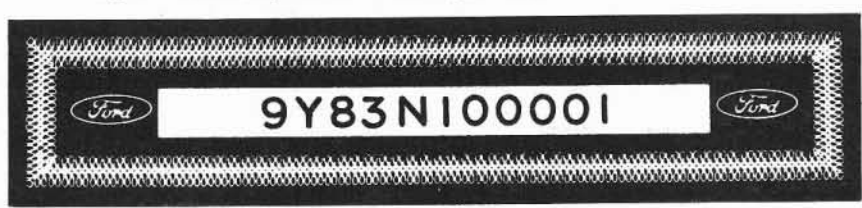


Fig. 2—Typical Vehicle Identification Number (VIN) Tab

W 1002-A

VEHICLE WARRANTY NUMBER

The vehicle warranty number is the first line of numbers and letters appearing on the Warranty Plates (Fig. 1). The Warranty Plate is riveted to the left front door lock face panel. The first number indicates the model year. The letter following the model year number indicates the manufacturing assembly plant. The next two numbers designate the Body Serial Code followed by a letter expressing the Engine Code. The group of six digits remaining on the first line indicate the Consecutive Unit Number.

VEHICLE DATA

The vehicle data appears on the second or lower line on the Warranty Plate. The first two numbers and a letter identify the Body Style. A letter or a number appears next indicating the Exterior Paint Color followed by a number-letter combination designating the Interior Trim. To the right of this code appears the Date Code indicating the date the car was manufactured. A two-digit number next designates the district in which the car was ordered and may appear in conjunction with a Domestic Special Order or Foreign Special Order number when applicable. The final two spaces indicate the Rear Axle Ratio (numbers for regular axles, letters for locking-types) and the Transmission type (numbers for manual, letters for automatic).

OFFICIAL VEHICLE IDENTIFICATION NUMBER

The official Vehicle Identification Number (VIN) for title and registration purposes is stamped on an aluminum tab that is riveted to the instrument panel close to the windshield on the driver's side of the car and is visible from outside (Fig. 2).

MODEL YEAR CODE

The number 9 designates 1969.

ASSEMBLY PLANT CODES

Code Letter	Code Letter
A.....Atlanta	L.....Michigan Truck
B.....Oakville (Canada)	N.....Norfolk
C.....Ontario Truck	P.....Twin Cities
D.....Dallas	R.....San Jose
E.....Mahwah	S.....Allen Park
F.....Dearborn	T.....Metuchen
G.....Chicago	U.....Louisville
H.....Lorain	W.....Wayne
J.....Los Angeles	X.....St. Thomas
K.....Kansas City	Y.....Wixom
	Z.....St. Louis

BODY SERIAL AND STYLE CODES

The two-digit numeral which follows the assembly plant code identifies the body series. This two-digit number is used in conjunction with the Body Style Code, in the Vehicle Data, which consists of a two-digit number with a letter suffix. The following chart lists the Body Serial Codes, Body Style Codes and the model.

LINCOLN CONTINENTAL

Body Serial Code	Body Style Code	Body Type
82	53A	4-Door Sedan
80	65A	2-Door Hardtop

MARK III

Body Serial Code	Body Style Code	Body Type
89	65A	2-Door Hardtop

COUGAR

Body Serial Code	Body Style Code	Body Type	Model
91	65A	2-Door Hardtop ③	Standard
92	76A	Convertible ③	
93	65B	2-Door Hardtop ③	XR-7 Luxury
94	76B	Convertible ③	
91	65C	2-Door Hardtop ①	Standard

① Bench Seat ② Split Bench ③ Bucket Seats

MERCURY

Body Serial Code	Body Style Code	Body Type	Model
44	54A	4-Door Sedan ①	Monterey
46	65A	2-Door Hardtop—Formal ①	
48	57A	4-Door Hardtop ①	
45	76A	Convertible ①	

CANADA ONLY

40	53M	4-Door Hardtop Sedan ①	Marquis
41	65M	2-Door Hardtop ①	
42	57M	4-Door Hardtop ①	
54	54C	4-Door Sedan ①	Monterey—Custom
56	65B	2-Door Hardtop ①	
58	57B	4-Door Hardtop ①	
63	53F	4-Door Hardtop Sedan ①②	Marquis (U.S.) Brougham (Canada)
66	65F	2-Door Hardtop ①②	
68	57F	4-Door Hardtop ①②	
65	76F	Convertible ①②	
63	53C	4-Door Hardtop Sedan ②	Brougham (Option)
66	65C	2-Door Hardtop ②	
68	57C	4-Door Hardtop ②	
60	63G	2-Door Hardtop	Marauder
61	63H	2-Door Hardtop ①②③	
72	71B	4-Door 2 Seat ①	Monterey Wagon
72	71C	4-Door 3 Seat (Side Facing) ①	
74	71F	4-Door 2 Seat ①	Monterey—Custom Wagon
74	71G	4-Door 3 Seat (Side Facing) ①	
76	71E	4-Door 2 Seat ①②	Marquis Colony Park
76	71A	4-Door 3 Seat (Side Facing) ①②	

① Bench Seat ② Split Bench ③ Bucket Seats

METEOR (CANADA)

Body Serial Code	Body Style Code	Body Type	Model
20	54A	4-Door Sedan ①	Rideau
21	54B	4-Door Sedan ①	Rideau 500
23	65B	2-Door Hardtop ①	
30	54C	4-Door Sedan ①	Montcalm
35	65C	2-Door Hardtop ①	
35	65E	2-Door Hardtop ①③	
33	57C	4-Door Hardtop ①	
34	76C	Convertible ①	
34	76E	Convertible ①③	
24	65F	2-Door Hardtop ①③	LeMoyné
27	57F	2-Door Hardtop ①③	
28	71B	Rideau 500—6 Passenger ①	Station Wagons
29	71C	Rideau 500—Dual Face Rear ①	
38	71E	Montcalm—6 Passenger ①	
39	71A	Montcalm—Dual Face Rear ①	

① Bench Seat ② Split Bench ③ Bucket Seats

BODY SERIAL AND STYLE CODES—(continued)
MONTEGO

Body Serial Code	Body Style Code	Body Type	Model
01	65A	2-Door Hardtop ^①	Comet
02	54A	4-Door Sedan ^①	
06	54B	4-Door Sedan ^①	Montego
07	65B	2-Door Hardtop ^①	
10	54D	4-Door Sedan ^①	Montego MX
11	65D	2-Door Hardtop ^①	
12	76D	Convertible ^①	
11	65E	2-Door Hardtop ^②	Montego MX
12	76B	Convertible ^②	
10	54C	4-Door Sedan	Montego MX Brougham
11	65C	4-Door Hardtop	
15	63A	2-Door Hardtop ^③	Cyclone Cyclone CJ
15	63C	2-Door Hardtop ^③	
16	63H	2-Door Hardtop GT ^③	
03	71B	Montego ^①	Station Wagons
08	71C	Montego MX ^①	
08	71A	Montego MX ^①	

① Bench Seat ② Split Bench ③ Bucket Seats

THUNDERBIRD

Body Serial Code	Body Style Code	Body Type	Model
83	65A	2-Door Hardtop ^②	Thunderbird
83	65C	2-Door Hardtop ^①	
84	65B	2-Door Landau ^③	Thunderbird
84	65D	2-Door Landau ^①	
87	57B	4-Door Landau ^③	Thunderbird
87	57C	4-Door Landau ^①	

① Bench Seat ② Split Bench ③ Bucket Seats

FALCON

Body Serial Code	Body Style Code	Body Type	Model
10	62A	2-Door Sedan ^①	Standard
11	54A	4-Door Sedan ^①	
20	62B	2-Door Sedan ^①	Futura
22	62C	2-Door Sports Coupe ^①	
21	54B	4-Door Sedan ^①	
12	71A	Standard ^①	Station Wagons
23	71B	Futura ^①	

① Bench Seat ② Split Bench ③ Bucket Seats

MUSTANG

Body Serial Code	Body Style Code	Body Type	Model
01	65A	2-Door Hardtop ^③	Standard
02	63A	2-Door Fastback ^②	
03	76A	Convertible ^③	
01	65B	2-Door Hardtop ^③	Luxury
02	63B	2-Door Fastback ^③	
03	76B	Convertible ^③	
01	65C	2-Door Hardtop ^①	Standard
01	65D	2-Door Hardtop ^①	Luxury
01	65E	2-Door Hardtop ^③	"Grande"
02	63C	2-Door Fastback ^③	"Mach 1"

① Bench Seat ② Split Bench ③ Bucket Seats

FORD

Body Serial Code	Body Style Code	Body Type	Model
50	62E	2-Door Sedan ^①	Custom
51	54E	4-Door Sedan ^①	
52	62B	2-Door Sedan ^①	Custom 500
53	54B	4-Door Sedan ^②	
54	54A	4-Door Sedan ^①	Galaxie 500
55	63B	2-Door Hardtop ^①	
58	65C	2-Door Hardtop ^①	
56	57B	4-Door Hardtop ^①	
57	76A	Convertible ^①	
60	63C	2-Door Hardtop ^{① ③}	Ford XL
61	76B	Convertible ^{① ③}	
64	54C	4-Door Sedan ^{① ②}	Ford LTD
62	65A	2-Door Hardtop ^{① ② ③}	
66	57F	4-Door Hardtop ^{① ② ③}	
70	71D	Ranchwagon—6 Passenger ^①	Station Wagons
71	71H	Custom 500 Ranchwagon—6 Passenger ^①	
72	71J	Custom 500 Ranchwagon—Dual Face Rear ^①	Station Wagons
73	71B	Country Sedan—6 Passenger ^①	
74	71C	Country Sedan—Dual Face Rear ^②	
75	71E	Country Squire—6 Passenger ^①	
76	71A	Country Squire—Dual Face Rear ^②	

① Bench Seat ② Split Bench ③ Bucket Seats

FAIRLANE

Body Serial Code	Body Style Code	Body Type	Model
30	65A	2-Door Hardtop ^①	Fairlane
31	54A	4-Door Sedan ^①	
34	54B	4-Door Sedan ^①	Fairlane 500
35	63B	2-Door Hardtop ^①	
33	65B	2-Door Hardtop ^①	
36	76B	Convertible	
35	63E	2-Door Hardtop ^③	Fairlane 500
33	65E	2-Door Hardtop ^②	
36	76E	Convertible ^③	
40	65C	2-Door Hardtop ^①	Torino
41	54C	4-Door Sedan ^①	
42	63F	2-Door Hardtop ^①	Torino GT
44	65F	2-Door Hardtop ^①	
43	76F	Convertible	
42	63D	2-Door Hardtop	Torino GT
44	65D	2-Door Hardtop ^③	
43	76D	Convertible	
46	63B, 63H	2-Door Fastback	Cobra
45	65A, 65H	2-Door Hardtop	
32	71D	Fairlane ^①	Station Wagons
37	71B	Fairlane 500 ^①	
38	71E	Fairlane Torino Squire ^①	
47	66A	Ranchero ^①	Ranchero
48	66B	Ranchero 500 ^①	
48	66B (Opt.)	Ranchero 500 ^③	Ranchero
49	66C	Ranchero ^①	Ranchero GT
49	66D	Ranchero ^③	

① Bench Seat ② Split Bench ③ Bucket Seats

BODY SERIAL STYLE CODES—(continued)
REAR AXLE RATIO CODES

Conventional	Limited-Slip	Ratio
2.....	K.....	2.75:1
3.....	L.....	2.79:1
4.....	M.....	2.80:1
6.....	O.....	3.00:1
7.....	P.....	3.10:1
9.....	R.....	3.25:1
A.....	S.....	3.50:1
C.....	U.....	3.08:1
	V.....	3.91:1
	W.....	4.30:1

TRANSMISSION CODES

Code	Type
1.....	3-Speed Manual
5.....	4-Speed Manual—wide ratio
6.....	4-Speed Manual—close ratio
W.....	Automatic (C4)
U.....	Automatic (C6)
Y.....	Automatic (MX)
X.....	Automatic (FMX)
T.....	FMX-L
Z.....	Automatic (C6 Special)

ENGINE CODES

Code	Type
U.....	6 Cyl. 170 Cu. In. (1V)
T.....	6 Cyl. 200 Cu. In. (1V)
2.....	6 Cyl. ① 200 Cu. In. (1V)
L.....	6 Cyl. 250 Cu. In. (1V)
3.....	6 Cyl. ① 250 Cu. In. (1V)
V.....	6 Cyl. 240 Cu. In. (1V)
5.....	6 Cyl. ① 240 Cu. In. (1V)
B.....	6 Cyl. 240 Cu. In. (1V) Police
E.....	6 Cyl. 240 Cu. In. (1V) Taxi
F.....	8 Cyl. 302 Cu. In. (2V)
6.....	8 Cyl. ① 302 Cu. In. (2V)
D.....	8 Cyl. 302 Cu. In. (2V) Police & Taxi
H.....	8 Cyl. 351 Cu. In. (2V)
M.....	8 Cyl. 351 Cu. In. (4V)
Y.....	8 Cyl. 390 Cu. In. (2V)
X.....	8 Cyl. ⑤ 390 Cu. In. (2V)
S.....	8 Cyl. ⑥ 390 Cu. In. (4V)
W.....	8 Cyl. ④ 427 Cu. In. (4V)
Q.....	8 Cyl. 428 Cu. In. (4V) CJ
R.....	8 Cyl. ⑥ 428 Cu. In. (4V) CJ
P.....	8 Cyl. ② 428 Cu. In. (4V) Police
K.....	8 Cyl. 429 Cu. In. (2V)
N.....	8 Cyl. 429 Cu. In. (4V)
A.....	8 Cyl. 460 Cu. In. (4V)

① Low Compression ② Premium Fuel ⑤ Improved Performance
 ④ High Performance ⑥ Ram Air Induction

CONSECUTIVE UNIT NUMBER

Starting Serial Numbers—1969 Passenger Cars

100,001—Ford, Fairlane, Falcon, Mustang, Thunderbird

500,001—Mercury, Montego, Cougar

500,001—Meteor (will use Mercury Warranty Plate)

848,001—Lincoln Continental & Mark III

EXTERIOR PAINT COLOR CODES

Code	M-32-J Number	Color
A.....	1724-A	Black
B.....	3059-A	Maroon
C.....	3197-A	Dk. Ivy Green Met.
D.....	3303-A	Pastel Gray
E.....	3191-A	Lt. Aqua
F.....	3065-A	Dk. Aqua Met.
G.....	3203-A	Med. Orchid Met.
H.....	2067-A	Lt. Green
I.....	2041-A	Med. Lime Met.
J.....	3080-A	Dk. Aqua Met.
K.....	3204-A	Dk. Orchid Met.
L.....	3060-A	Lt. Gray Met.
M.....	1619-A	White
N.....	921-A	Platinum
P.....	3064-A	Med. Blue Met.
Q.....	1624-A	Med. Blue Met.
R.....	3198-A	Lt. Gold
S.....	3119-A	Med. Gold Met.
T.....	2008-A	Red
U.....	1070-A	Med. Aqua Met.
V.....	3201-A	Lt. Aurora Copper Met.
W.....	3120-A	Yellow
X.....	3061-A	Dk. Blue Met.
Y.....	3202-A	Burnt Orange Met.
Z.....	2044-A	Dk. Grey Met.
2.....	3071-A	Lt. Ivy Yellow
3.....	1730-A	Calypso Coral
4.....	3230-A	Med. Emerald Met.
6.....	3077-A	Med. Blue Met.
7.....	3193-A	Lt. Emerald Green Met.
8.....	3190-A	Lt. Blue

INTERIOR TRIM CODES

Code	Trim Schemes
1A.....	Black Vinyl (Cougar, Falcon)
1A.....	Black Cloth & Vinyl
1B.....	Med./Lt. Blue Vinyl
1B.....	Dk. Blue Cloth & Vinyl
1B.....	(Lincoln, T-Bird, Mark III, Mercury)
1B.....	Lt. Blue Cloth & Vinyl
1B.....	(Ford, Montego, Meteor)
1D.....	Dk. Red Cloth and/or Dk. Red Vinyl
1F.....	Med. Saddle Vinyl (Cougar)
1G.....	Dk. Ivy Gold Cloth & Vinyl
1G.....	Lt. Ivy Gold Vinyl (Cougar)
1K.....	Lt. Aqua Cloth and/or Lt. Aqua Vinyl
1D.....	Med. Grey Cloth & Vinyl (Mark III)
1Y.....	Lt. Nugget Gold Vinyl (Cougar-Falcon)
1Y.....	Lt. Nugget Gold Cloth & Vinyl
2A.....	Black Vinyl
2A.....	Black Leather & Vinyl (Lincoln)
2A.....	Black Leather (Mark III)
2B.....	Dk. & Lt. Blue Vinyl
2B.....	Dk. Blue Leather & Vinyl (Lincoln)
2B.....	Dk. Blue Leather (Mark III)
2D.....	Dk. Red Vinyl
2D.....	Dk. Red Leather & Vinyl (Lincoln)
2D.....	Dk. Red Leather (Mark III)
2F.....	Med. Saddle Vinyl
2F.....	Med. Saddle Leather & Vinyl (Lincoln)
2G.....	Dk. Ivy Gold Vinyl
2G.....	Dk. Ivy Gold Leather & Vinyl (Lincoln)
2K.....	Lt. Aqua Vinyl
2K.....	Lt. Aqua Leather & Vinyl (Lincoln)
2K.....	Lt. Aqua Leather (Mark III)
2P.....	Med. Grey Leather & Vinyl (Lincoln)
2P.....	Med. Grey Leather (Mark III)
2U.....	Pastel Parchment Leather (Mark III)
2W.....	White Vinyl
2W.....	White Leather & Vinyl (Lincoln)
2W.....	White Leather (Mark III)
2Y.....	Lt. Nugget Gold Vinyl
2Y.....	Lt. Nugget Gold Leather & Vinyl (Lincoln)
2Y.....	Lt. Nugget Gold Leather (Mark III)
3A.....	Black Vinyl (Mustang, Montego)
3A.....	Black Cloth & Vinyl
3A.....	Black Leather & Vinyl (Lincoln)

INTERIOR TRIM CODES—(continued)

Code	Trim Schemes
3B	Lt./Dk. Blue Vinyl
3B	Lt. Blue Cloth & Vinyl (Falcon, Fairlane, Ford, Montego, Meteor)
3B	Dk. Blue Cloth & Vinyl (T-Bird, Mercury)
3B	Dk. Blue Leather & Vinyl (Lincoln)
3D	Dk. Red Vinyl
3G	Dk. Ivy Gold Cloth & Vinyl
3G	Dk. Ivy Gold Leather & Vinyl (Lincoln)
3K	Lt. Aqua Cloth & Lt. Aqua Vinyl
3W	White Vinyl
3W	White Leather & Vinyl (Lincoln)
3Y	Lt. Nugget Gold Cloth & Vinyl
3Y	Lt. Nugget Gold Vinyl (T-Bird)
4A	Black Vinyl
4B	Dk./Lt. Blue Vinyl
4D	Dk. Red Vinyl
4G	Dk. Ivy Gold Vinyl
4W	White Vinyl
4Y	Lt. Nugget Gold Vinyl
5A	Black Cloth and/or Black Vinyl
5A	Black Leather & Vinyl (Lincoln)
5B	Lt. Blue Cloth & Vinyl (Montego-Meteor-Ford)
5B	Dk. Blue Leather & Vinyl (Lincoln)
5B	Dk. & Lt. Blue Vinyl
5B	Dk. Blue Cloth & Vinyl (Mercury)
5D	Dk. Red Cloth & Vinyl (Montego)
5D	Dk. Red Vinyl
5D	Dk. Red Leather & Vinyl (Lincoln)
5F	Med. Saddle Leather & Vinyl (Lincoln)
5G	Dk. Ivy Gold Vinyl
5G	Dk. Ivy Gold Cloth & Vinyl
5G	Dk. Ivy Gold Leather & Vinyl (Lincoln)
5K	Lt. Aqua Cloth & Vinyl (Montego)
5K	Dk. & Lt. Aqua Vinyl
5K	Lt. Aqua Leather & Vinyl (Lincoln)
5W	White Vinyl
5W	White Leather & Vinyl (Lincoln)
5Y	Lt. Nugget Gold Cloth & Vinyl
5Y	Lt. Nugget Gold Vinyl (Mustang-Fairlane)
5Y	Lt. Nugget Gold Leather & Vinyl (Lincoln)
6A	Black Vinyl
6A	Black Cloth & Vinyl (Lincoln)
6A	Black Leather & Vinyl (Cougar)
6B	Dk. & Lt. Blue Vinyl
6B	Dk. Blue Leather & Vinyl (Cougar)
6D	Dk. Red Vinyl
6D	Dk. Red Leather & Vinyl (Cougar)
6F	Med. Saddle Leather & Vinyl
6G	Dk. Ivy Gold Vinyl
6G	Dk. Ivy Gold Cloth & Vinyl
6G	Dk. Ivy Gold Leather & Vinyl (Cougar)
6K	Lt. Aqua Vinyl
6K	Lt. Aqua Leather & Vinyl (Cougar)
6W	White Vinyl
6Y	Lt. Nugget Gold Vinyl
6Y	Lt. Nugget Gold Leather & Vinyl (Cougar)
7A	Black Vinyl
7A	Black Cloth & Vinyl (Fairlane)
7A	Black Leather & Vinyl (Lincoln)
7B	Lt. Blue Vinyl (Cougar-Montego)
7B	Dk. Blue Cloth & Vinyl (Ford)
7B	Dk. Blue Leather & Vinyl (Lincoln)
7D	Dk. Red Vinyl (Mustang)
7D	Dk. Red Cloth & Vinyl
7G	Dk. Ivy Gold Vinyl
7G	Dk. Ivy Gold Leather & Vinyl (Lincoln)
7K	Lt. Aqua Cloth & Vinyl
7W	White Vinyl
7W	White Leather & Vinyl (Lincoln)
7Y	Lt. Nugget Gold Cloth & Vinyl
7Y	Lt. Nugget Gold Vinyl (Ford, Meteor, Mustang)
8A	Black Vinyl
8A	Black Leather & Vinyl (T-Bird)
8B	Dk./Lt. Blue Vinyl
8D	Dk. Red Vinyl
8F	Med. Saddle Vinyl
8G	Dk. Ivy Gold Vinyl
8W	White Vinyl

INTERIOR TRIM CODES—(continued)

Code	Trim Schemes
8W	White Leather & Vinyl (T-Bird)
9A	Black Vinyl
9A	Black Cloth & Vinyl (Ford-Meteor)
9B	Lt. Blue Vinyl
9B	Lt. Blue Cloth & Vinyl (Ford-Meteor)
9D	Dk. Red Vinyl
9D	Dk. Red Cloth & Vinyl (Ford-Meteor)
9G	Dk. Ivy Gold Cloth & Vinyl
9K	Lt. Aqua Cloth & Vinyl
9Y	Lt. Nugget Gold Cloth & Vinyl
AA	White Vinyl With Black
AB	White Vinyl With Blue
AD	White Vinyl With Red
AG	White Vinyl With Ivy Gold
AK	White Vinyl With Aqua
AY	White Vinyl With Nugget Gold
BA	White Vinyl With Black (Cougar)
BA	Black Vinyl (Fairlane)
BB	White Vinyl With Blue (Cougar)
BB	Lt. Blue Vinyl (Fairlane)
BD	White Vinyl With Red (Cougar)
BG	White Vinyl With Ivy Gold (Cougar)
BK	White Vinyl With Aqua (Cougar)
BY	White Vinyl With Lt. Nugget Gold (Cougar)
BY	Lt. Nugget Gold Vinyl (Fairlane)
CA	Black Cloth & Vinyl
CA	Black Vinyl (Montego)
CB	Dk. Blue Cloth & Vinyl
CB	Lt. Blue Vinyl (Montego)
CG	Dk. Ivy Gold Cloth & Vinyl
CK	Lt. Aqua Cloth & Vinyl
CY	Lt. Nugget Gold Cloth & Vinyl
CY	Lt. Nugget Gold Vinyl (Montego)
DA	Black Cloth & Vinyl
DA	White Vinyl With Black (Cougar)
DA	Black Vinyl (Montego) (Mercury)
DB	Dk. Blue Cloth & Vinyl
DB	Dk. Blue Vinyl (Mercury)
DB	White Vinyl With Blue (Cougar)
DB	Lt. Blue Vinyl (Montego)
DD	White Vinyl With Red (Cougar)
DD	Dk. Red Cloth & Vinyl
DG	Dk. Ivy Gold Cloth & Vinyl
DK	Lt. Aqua Cloth & Vinyl
DY	Lt. Nugget Gold Cloth & Vinyl
DY	Lt. Nugget Gold Vinyl (Mercury)
EA	Black Cloth & Vinyl
EB	Dk. Blue Cloth & Vinyl
ED	Dk. Red Cloth & Vinyl
EG	Dk. Ivy Gold Cloth & Vinyl
EK	Lt. Aqua Cloth & Vinyl
EY	Lt. Nugget Gold Cloth & Vinyl
FA	Black Vinyl
FA	White Vinyl With Black (Cougar)
FB	Lt./Dk. Blue Vinyl
FB	White Vinyl With Blue (Cougar)
FD	Dk. Red Vinyl
FD	White Vinyl With Red (Cougar)
FG	Dk. Ivy Gold Vinyl
FG	White Vinyl With Dk. Ivy Gold (Cougar)
FK	Lt. Aqua Vinyl
FK	White Vinyl With Lt. Aqua (Cougar)
FW	White Vinyl
FY	Lt. Nugget Gold Vinyl
FY	White Vinyl With Nugget Gold (Cougar)
GA	Black Vinyl
GB	Lt. Blue Vinyl
GD	Dk. Red Vinyl
GG	Dk. Ivy Gold Vinyl
GY	Lt. Nugget Gold Vinyl
HA	Black Vinyl
HA	White Vinyl With Black (Cougar)
HA	Black Leather & Vinyl (Mercury)
HB	Lt. Blue Vinyl
HB	White Vinyl With Blue (Cougar)
HD	Dk. Red Vinyl
HD	Dk. Red Leather & Vinyl (Mercury)
HD	White Vinyl With Dk. Red (Cougar)
HG	Dk. Ivy Gold Vinyl
HG	White Vinyl With Ivy Gold (Cougar)

INTERIOR TRIM CODES—(continued)

Code	Trim Schemes
HK	Lt. Aqua Vinyl
HK	White Vinyl With Lt. Aqua (Cougar)
HW	White Leather & Vinyl (Mercury)
HW	White Vinyl (Fairlane)
HY	White Vinyl With Nugget Gold (Cougar)
HY	Lt. Nugget Gold Vinyl
JA	Black Vinyl
JB	Lt. Blue Cloth & Vinyl (Lincoln)
JG	Lt. Ivy Gold Cloth & Vinyl
JW	White Vinyl
JY	Lt. Nugget Gold Vinyl
JY	Lt. Nugget Gold Cloth & Vinyl (Lincoln)
KA	Black Vinyl
KA	Black Cloth & Vinyl (Ford-Mercury-Meteor)
KA	Black Leather & Vinyl (Lincoln)
KB	Dk. Blue Cloth & Vinyl
KB	Med. Blue Cloth & Vinyl (Ford-Montego)
KB	Dk. Blue Leather & Vinyl (Lincoln)
KD	Dk. Red Cloth & Vinyl
KG	Dk. Ivy Gold Leather & Vinyl (Lincoln)
KG	Dk. Ivy Gold Cloth & Vinyl
KL	Lt. Silver Leather & Vinyl (Lincoln)
KW	White Vinyl
KW	White Leather & Vinyl (Lincoln)
KY	Lt. Nugget Gold Vinyl
LA	Black Vinyl
LA	Black Leather & Vinyl (Lincoln)
LB	Lt. Blue Vinyl
LB	Dk. Blue Leather & Vinyl (Lincoln)
LD	Dk. Red Vinyl
LE	Lt. & Med. Beige Vinyl
LW	White Vinyl
LW	White Leather & Vinyl (Lincoln)
LY	Lt. Nugget Gold Vinyl
MA	Black Vinyl
MB	Dk. & Lt. Blue Vinyl
MD	Dk. Red Vinyl
MW	White Vinyl
NA	Black Vinyl
NB	Lt. Blue Vinyl
NY	Lt. Nugget Gold Vinyl
PA	Black Vinyl
PB	Lt. Blue Vinyl
PY	Lt. Nugget Gold Vinyl
QA	Black Vinyl
QB	Dk. & Lt. Blue Vinyl
QW	White Vinyl
QY	Lt. Nugget Gold Vinyl
RA	Black Vinyl
RB	Lt. Blue Vinyl
RD	Dk. Red Vinyl
RW	White Vinyl
RY	Lt. Nugget Gold Vinyl
SB	Lt. Blue Leather & Vinyl (Lincoln)
SG	Lt. Ivy Gold Leather & Vinyl (Lincoln)
TG	Lt. Ivy Gold Leather & Vinyl (Lincoln)
VA	Black Vinyl
VB	Dk. Blue Vinyl
VG	Dk. Ivy Gold Vinyl
VW	White Vinyl
VY	Lt. Nugget Gold Vinyl
WA	Black Vinyl
WW	White Vinyl
WY	Lt. Nugget Gold Vinyl
YA	Black Cloth & Vinyl
YB	Dk. Blue Cloth & Vinyl
YD	Dk. Red Cloth & Vinyl
YG	Dk. Ivy Gold Cloth & Vinyl
YK	Lt. Aqua Cloth & Vinyl
YY	Lt. Nugget Gold Cloth & Vinyl
ZA	Black Cloth & Vinyl
ZB	Dk. Blue Cloth & Vinyl
ZG	Dk. Ivy Gold Cloth & Vinyl

DATE CODES

A number signifying the date precedes the month code letter. A second-year code letter will be used if the model exceeds 12 months.

Month	Code First Year	Code Second Year
January	A	N
February	B	P
March	C	Q
April	D	R
May	E	S
June	F	T
July	G	U
August	H	V
September	J	W
October	K	X
November	L	Y
December	M	Z

DISTRICT CODES (DSO)

Units built on a Domestic Special Order, Foreign Special Order, or other special orders will have the complete order number in this space. Also to appear in this space is the two-digit code number of the District which ordered the unit. If the unit is a regular production unit, only the District code number will appear.

FORD

Code	District	Code	District
11	Boston	51	Denver
13	New York	53	Kansas City
15	Newark	54	Omaha
16	Philadelphia	55	St. Louis
17	Washington	56	Davenport
21	Atlanta	61	Dallas
22	Charlotte	62	Houston
24	Jacksonville	63	Memphis
25	Richmond	64	New Orleans
28	Louisville	65	Oklahoma City
32	Cleveland	71	Los Angeles
33	Detroit	72	San Jose
35	Lansing	73	Salt Lake City
37	Buffalo	74	Seattle
38	Pittsburgh	75	Phoenix
41	Chicago	83	Government
43	Milwaukee	84	Home Office Reserve
44	Twin Cities	85	American Red Cross
46	Indianapolis	89	Transportation Services
47	Cincinnati	90-99	Export

LINCOLN-MERCURY

Code	District	Code	District
11	Boston	34	Detroit
15	New York	41	Chicago
16	Philadelphia	42	St. Louis
17	Washington	46	Twin Cities
21	Atlanta	51	Denver
22	Dallas	52	Los Angeles
23	Jacksonville	53	Oakland
26	Memphis	54	Seattle
31	Buffalo	84	Home Office Reserve
32	Cincinnati		
33	Cleveland	90	Export

FORD OF CANADA

Code	District	Code	District
B1	Central	B4	Midwestern
B2	Eastern	B6	Western
B3	Atlantic	B7	Pacific
I1 thru I7	Export		

Note: Canadian Lincoln-Mercury units use prefix "A" in place of "B".