

SECTION 13—BODY—FRAME

- 13A1 — VEHICLE IDENTIFICATION — CANADIAN MODELS
- 13A2 — VEHICLE IDENTIFICATION — U.S. MODELS
- 13B — BODY CONSTRUCTION
- 13C — SEALER APPLICATION
- 13D — BODY MOUNTING
- 13E — FRONT BUMPER
- 13F — RADIATOR GRILLE
- 13G — FRONT FENDERS
- 13H — HOOD
- 13J — WINDSHIELD
- 13K — FRONT SEAT

- 13L — DOORS AND DOOR WINDOWS
- 13M — QUARTER WINDOWS
- 13N — BACK WINDOW
- 13P — LUGGAGE COMPARTMENT
- 13Q — REAR BUMPER
- 13R — CONVERTIBLE TOP
- 13S — STATION WAGON
- 13T — EXTERIOR MOULDINGS
- 13U — ELECTRICAL
- 13W — FRAME

13A1 — VEHICLE IDENTIFICATION — CANADIAN MODELS

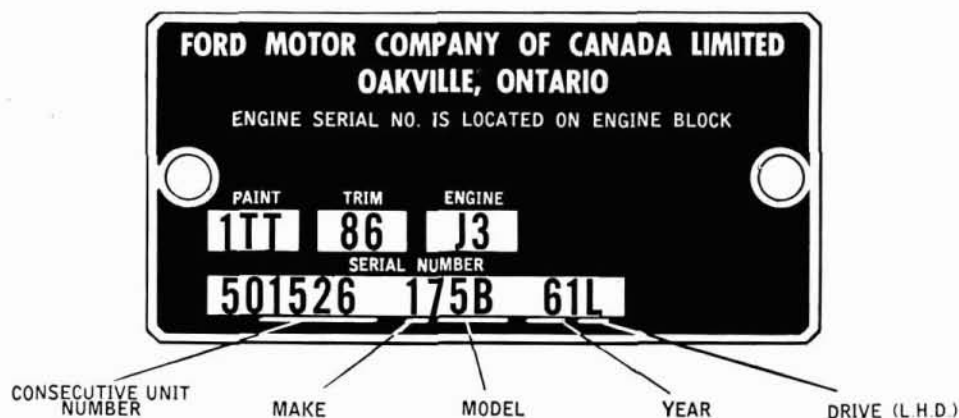


FIG. 13A-1A — IDENTIFICATION PLATE

IDENTIFICATION PLATE

The Mercury and Monarch identification plate is attached to the left front door pillar.

CONSECUTIVE UNIT NUMBER

Each year the assembly plant begins with a consecutive unit number and continues on for each unit built.

MAKE

Digit 1 indicates Mercury
Digit 3 indicates Monarch

MODEL

Indicates the Body Type:

54B	Four Door Sedan
65B	Two Door Hardtop
75B	Four Door Hardtop

YEAR

61 Indicates 1961 Model
L Indicates Left Hand Drive (R—Right Hand Drive)

PAINT AND TRIM COMBINATIONS

SOLID COLOURS

		TRIM	BLUE	GREEN	GOLD	RED AND BLACK	WHITE AND BLACK	TURQUOISE	1—ONE COLOUR
TRIM CODE		81	82	83	84	85	86		
PAINT CODE	AA		1						Mint Green
	BB			1	1	1			Raven Black
	CC	1							Starlight Blue
	DD							1	Aquamarine
	EE	1							Chesapeake Blue
	FF	1							Cambridge Blue
	GG		1						Laurel Green
	KK			1					Tawny Beige
	LL					1	1		Silver Gray
	NN				1				Algiers Bronze
	PP				1				Gold Dust Metallic
	RR					1	1		Monte Carlo Red
	SS						1		Summer Rose
	TT							1	Garden Turquoise
WW	1	1	1	1	1	1	1	Corinthian White	
YY						1		Desert Gold	

TU-TONE COLOURS (REVERSIBLE)

		TRIM	BLUE	GREEN	GOLD	RED AND BLACK	WHITE AND BLACK	TURQUOISE	2—TWO COLOUR
TRIM CODE		81	82	83	84	85	86		
PAINT CODE	WA		2						White & Mint Green
	WB			2	2	2			White & Raven Black
	WC	2							White & Starlight Blue
	WD							2	White & Aquamarine
	WE	2							White & Chesapeake Blue
	WF	2							White & Cambridge Blue
	WG		2						White & Laurel Green
	WK			2					White & Tawny Beige
	WL					2	2		White & Silver Gray
	WN				2				White & Algiers Bronze
	WP				2				White & Gold Dust Metallic
	WR					2	2		White & Monte Carlo Red
	WS						2		White & Summer Rose
	WT							2	White & Garden Turquoise
	WY						2		White & Desert Gold
	DT							2	Aquamarine & Garden Turquoise
	AG			2					Mint Green & Laurel Green
	CE	2							Starlight Blue & Chesapeake Blue
	CF	2							Starlight Blue & Cambridge Blue
	FE	2							Cambridge Blue & Chesapeake Blue
PK				2				Gold Dust Metallic & Tawny Beige	
RB					2	2		Monte Carlo Red & Raven Black	

PAINT COLOURS

A	Mint Green (Light)	M-30J-1373-SE
B	Raven Black	M-30J-1724-SE
C	Starlight Blue (Light)	M-30J-1361-SE
D	Aquamarine	M-30J-1139-SE
E	Chesapeake Blue Metallic (Dark)	M-30J-1367-SE
F	Cambridge Blue Metallic (Medium)	M-30J-1372-SE
G	Laurel Green Metallic (Medium)	M-30J-1364-SE
K	Tawny Beige	M-30J-1262-SE
L	Silver Gray Metallic (Platinum)	M-30J-1371-SE
N	Algiers Bronze Metallic	M-30J-1369-SE
P	Gold Dust Metallic	M-30J-1276-SE
R	Monte Carlo Red	M-30J-1232-SE
S	Summer Rose (Pink)	M-30J-1265-SE
T	Garden Turquoise Metallic	M-30J-1385-SE
W	Corinthian White	M-30J-1238-SE
Y	Desert Gold (Yellow)	M-30J-1366-SE
Z	Prime	M- 6J-49

ENGINES

- G-1 — 352 cu. in. — 2V — Low Compression — (Export Only)
- G-2 — 352 cu. in. — 2V — Used with single range automatic
- G-3 — 352 cu. in. — 2V — Used with dual range automatic
- J-2 — 390 cu. in. — 4V — Used with dual range automatic
- J-4 — 390 cu. in. — 4V — Low Compression — (Export Only)

13A2 — VEHICLE IDENTIFICATION — U.S. MODELS

PATENT PLATE

The patent plate, which includes the serial number, body style, body color, trim code, date of assembly, transmission code, and axle code, is riveted to the left front body pillar, between the front door hinges. See figure 13A-1.

The serial number designates model year of vehicle, assembly plant code letter, body type identification code number, engine code letter, and consecutive unit number.

Model Year

Number one (1) denotes 1961 model year.

Assembly Plant Code Letters

CODE LETTER	ASSEMBLY PLANT
E	Mahwah
J	Los Angeles
Z	St. Louis
W	Wayne

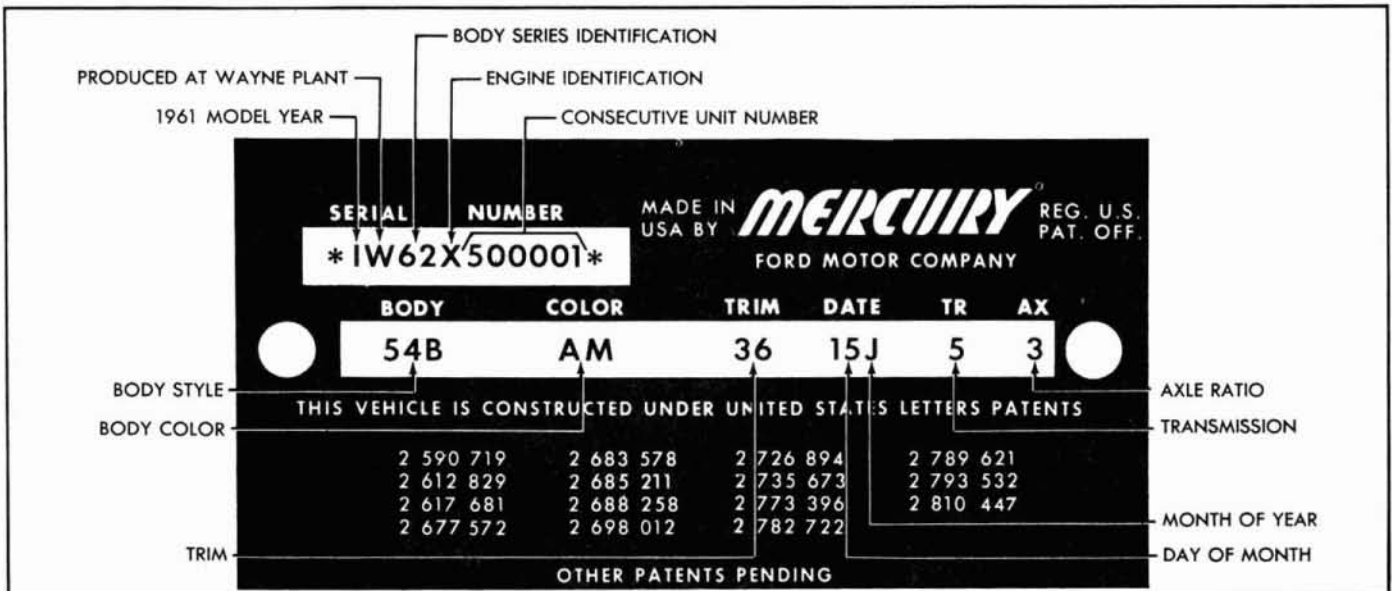


Fig. 13A-1—Patent Plate—(61MM-8008)

Engine Identification Code Letters

CODE LETTER	ENGINE
*R	292 CID 2V Carburetor (Low Compression)
*T	390 CID 4V carburetor (Low Compression)
V	223 CID 1V carburetor
W	292 CID 2V carburetor
X	352 CID 2V carburetor
Z	390 CID 4V carburetor
*Export only	

BODY STYLES

Meteor 600 Series

BODY STYLE	SERIAL CODE	BODY TYPE
64A	41	Two-Door Sedan
58A	42	Four-Door Sedan

Meteor 800 Series

BODY STYLE	SERIAL CODE	BODY TYPE
54A	52	Four-Door Sedan
62A	51	Two-Door Sedan
65A	57	Two-Door Hardtop
75A	54	Four-Door Hardtop

Monterey Series

BODY STYLE	SERIAL CODE	BODY TYPE
54B	62	Four-Door Sedan
65B	67	Two-Door Hardtop
75B	64	Four-Door Hardtop
76A	65	Two-Door Convertible

Station Wagons

BODY STYLE	SERIAL CODE	BODY TYPE
71C	72	Four-Door Meteor 600
71A	74	Four-Door Meteor 800
71B	76	Four-Door Colony Park

Exterior Body Color Codes

A single letter designates a solid body color and two letters denote a two-tone combination—the first letter, the lower color, and the second letter, the upper color. The following chart identifies the basic colors by code letter, name and manufacturing specification numbers.

CODE LETTER	COLOR	"M" NUMBER
A	Presidential Black	M-30J-1724
C	Turquoise Mist	M-30J-1139
D	Blue Haze	M-30J-1361
E	Saxon Green Metallic	M-30J-1364
F	Sunburst Yellow	M-30J-1366
G	Tawny Beige	M-30J-1262
H	Empress Blue Metallic	M-30J-1367
J	Signal Red	M-30J-1232
L	Gold Dust Metallic	M-30J-1276
M	Sultana White	M-30J-1238
Q	Sheffield Gray Metallic	M-30J-1371
R	Columbia Blue Metallic	M-30J-1372
S	Green Frost	M-30J-1373
V	Summer Rose	M-30J-1265
W	Regency Turquoise Metallic	M-30J-1385

Interior Trim Identification

A two-digit number indicates the color and type of trim.

A new procedure for Patent Plate identification of Deviation Trim Sets, when Service is affected, has been adopted for 1961.

When Deviation Trim Sets are established against an existing Trim Scheme, Patent Plate Code Identification will be made by adding a numerical suffix after the code if the Trim Set is *not* serviced, such as 23-1 or 23-2; and by adding an alphabetical suffix after the code if the Trim Set *is* serviced, such as 23-A or 23-B.

CODE NUMBER	MATERIAL AND COLOR
01	Medium Blue Metallic and Dark Blue Luster Weave Cloth
02	White Vinyl and Black Luster Weave Cloth
03	Medium Gold Metallic Vinyl and Dark Gold Luster Weave Cloth
05	Medium Blue Metallic Vinyl and Dark Blue Shadow Weave Cloth
06	White Vinyl and Black Shadow Weave Cloth

Interior Trim Identification (Continued)

CODE NUMBER	MATERIAL AND COLOR
08	Medium Gold Metallic Vinyl and Dark Gold Shadow Weave Cloth
09	Medium Turquoise Metallic Vinyl and Dark Turquoise Shadow Weave Cloth
10	Medium Green Metallic Vinyl and Dark Green Shadow Weave Cloth
11	Medium Blue Metallic Vinyl
12	White and Black Vinyl
13	White and Red Vinyl
14	White and Medium Gold Metallic Vinyl
15	Medium Turquoise Metallic Vinyl
24	Medium Blue Metallic Vinyl and Dark Blue Country Tweed Broadcloth
25	White Vinyl and Black Country Tweed Broadcloth
27	Medium Gold Metallic Vinyl and Dark Gold Country Tweed Broadcloth
29	Medium Turquoise Metallic Vinyl and Dark Turquoise Country Tweed Broadcloth
30	Medium Turquoise Metallic Vinyl and Dark Turquoise Luster Weave Cloth
32	Red Vinyl
33	Black Vinyl
34	Medium Blue Vinyl and Medium Blue Oval Tweed Cloth
35	White Vinyl and Medium Gray Oval Tweed Cloth
36	Red Vinyl and Medium Gray Oval Tweed Cloth
37	Medium Turquoise Vinyl and Medium Turquoise Oval Tweed Cloth

CODE NUMBER	MATERIAL AND COLOR
43	Brown Rib Morocco Vinyl (Police and Taxi)
44	Green Rib Morocco Vinyl (Police and Taxi)
45	Red Rib Morocco Vinyl (Police and Taxi)

Day and Month of Year Code

The number indicates the day of month vehicle was built and the letter indicates the month. Following is the month of year code chart:

CODE LETTER	MONTH	CODE LETTER	MONTH
A	January	G	July
B	February	H	August
C	March	J	September
D	April	K	October
E	May	L	November
F	June	M	December

Transmission Code

The transmission code number indicates the type of transmission installed in the vehicle.

CODE NUMBER	TYPE OF TRANSMISSION
1	Standard
2	Standard with Overdrive
3	Automatic—Single Range (Two-Speed)
4	Automatic—Dual Range (Three-Speed)
5	Automatic—Single Range (Three-Speed)

Rear Axle Ratio Code

The rear axle ratio code number indicates the ratio of the axle installed in the vehicle.

CODE NUMBER	AXLE RATIO	CODE NUMBER	AXLE RATIO
1	3.56:1	8	2.91:1
2	3.89:1	9	3.70:1
3	3.10:1	A	3.56:1 (Locking)
4	3.78:1	B	3.89:1 (Locking)
6	3.22:1	C	3.10:1 (Locking)

Note: Illustrations shown in this section will be for Mercury cars. Service procedures for Monarch cars will be very similar.

13B—BODY CONSTRUCTION

DESCRIPTION

The body is of all-steel construction, consisting of major panels, reinforcements, and braces welded together

INTERIOR PAINT COLORS

The following colors and manufacturing specification codes will identify interior paints or finishes by type. These paints or finishes are not identified by patent plate codes.

Semi-Gloss Enamels

"M" NUMBER	COLOR
M-21J-1386-C	Medium Blue Metallic
M-21J-1387-C	Medium Green Metallic
M-21J-1388-C	Turquoise Metallic
M-21J-1389-C	Medium Brown Metallic
M-21J-1413-C	Medium Gold Metallic
M-21J-1429-C	Red
M-21J-1724-C	Black
M-21J-1433-C	Cream

into one unit.

Figures 13B-1, 13B-2, 13B-3 and 13B-4 illustrate many of the major assemblies used in the body construction.

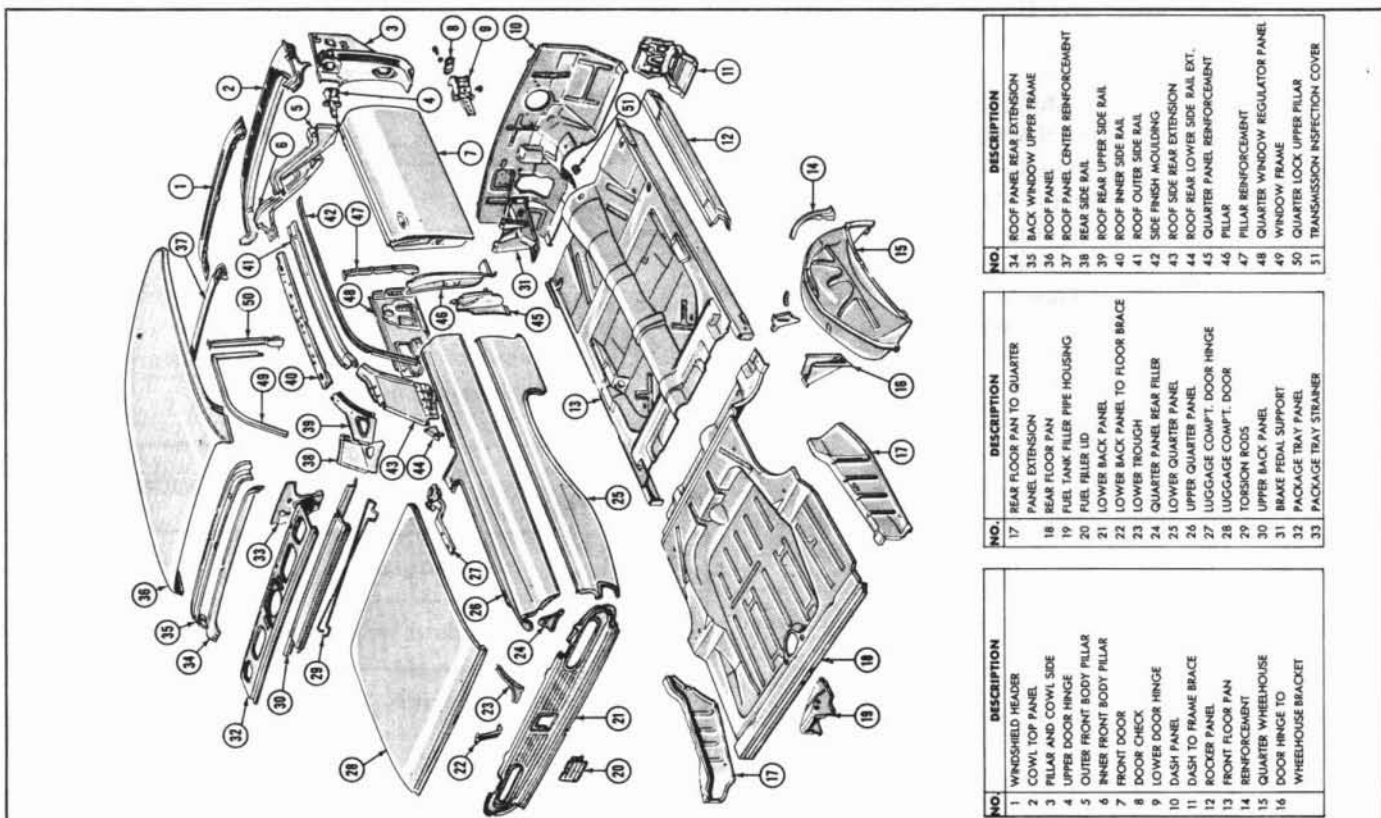


Fig. 13B-1—Body Construction—Model 62—(61MM-8059)